



Launch Information
Focus^{3D} X 330

14.10.2013

Antonio Ballester

Focus^{3D} X 330



The Perfect Instrument for 3D
Documentation and Land Surveying

Focus^{3D} X 330 - Overview

- Extended scanning.
- Integrated GPS receiver.
- Outdoor Scanning Capability.
- Low noise performance.
- Laser Class I.



Exploit the full range from one position





The “Golden Gate” of Gothenburg

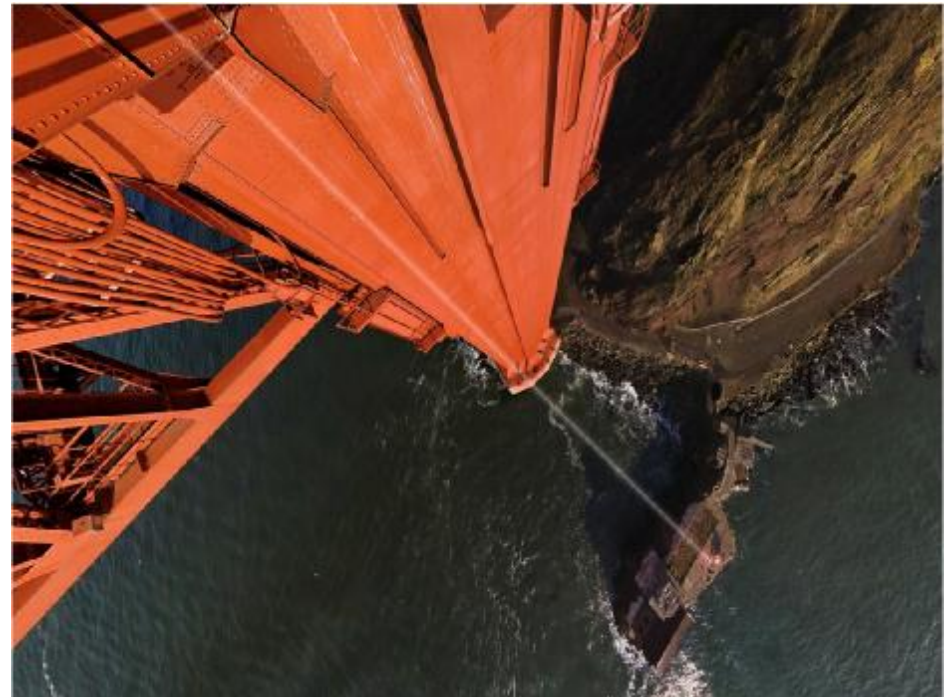




15 color scans in 4hrs

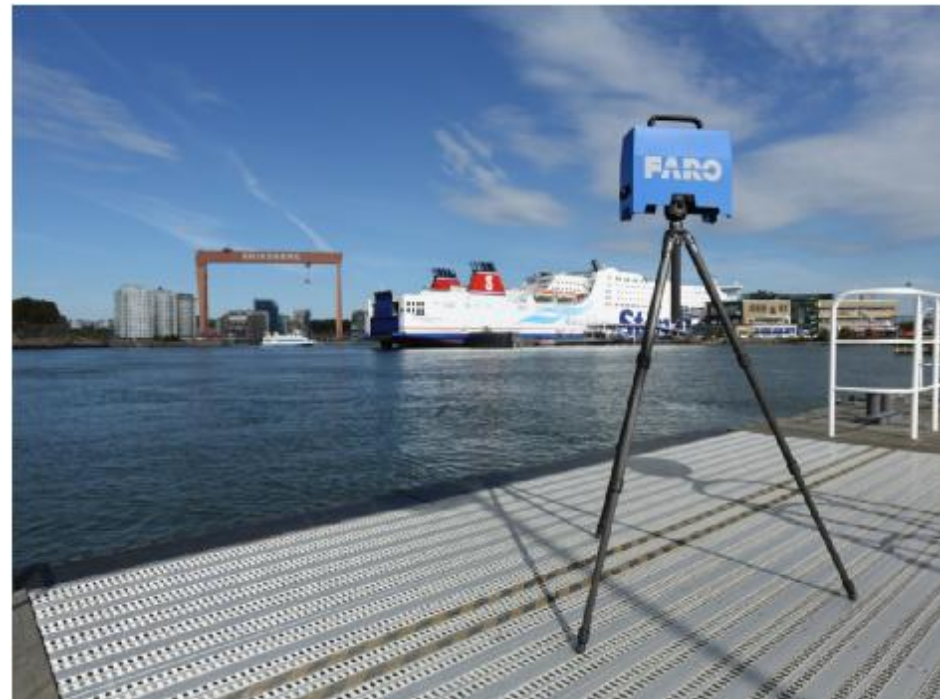
Focus^{3D} X 330

- **Extended scanning.**
 - The Focus3D X 330 can scan objects up to 330 meters away. Large buildings, land-site excavations and vast terrains can be surveyed with fewer scans, thus resulting in quicker project scanning completion.



Focus^{3D} X 330

- **Integrated GPS.**
 - With its integrated GPS receiver, the laser scanner is able to correlate individual scans in post-processing making it ideal for surveying based applications.



Focus^{3D} X 330

- **Outdoor scanning capability.**
 - The Focus3D X 330 now is able to perform fast and highly precise scanning in direct sunlight.



Focus^{3D} X 330

- **Low noise performance.**
 - The new FARO Focus3D X 330 delivers extraordinary scan data quality at extended range with very low noise.



Focus^{3D} X 330 - Specifications

Range Focus ^{3D} X 330:	0.6 – 330m
Measurement speed:	up to 976,000 points/second
Ranging error:	± 2mm
Ranging noise:	@10m – raw data: 0.3mm @90 % refl. @25m – raw data: 0.3mm @90 % refl. @10m – raw data: 0.4mm @10 % refl. @25m – raw data: 0.5mm @10 % refl.
Integr. colour camera:	Up to 70 mio. pixel
Field of view:	300° / 360°
Laser class:	Laser class 1
Weight:	5,2kg
Multi-Sensor:	GPS, Compass, Height Sensor, Dual Axis Compensator
Size:	240 x 200 x 100mm
Scanner control:	via touchscreen display and WLAN
New WLAN access:	Remote control, scan visualization and are possible on mobile devices with Flash®

Focus^{3D} X 330 - Accessories

- **Ruggedized protection cover.**
 - Ruggedized protection and transport cover in aluminum (included in S-7-330).



Focus^{3D} X 330 - Accessories

- **Panorama quick release.**
 - Simple way to easy take the scanner on and off, and be able to mount in every tripod (included in S-7-330).



Focus^{3D} X 330 -

S-7-330

Laser Scanner Focus3D X330.

Ships with:

- 1 Focus3D-X330, GPS, compass, altimeter (barometer), dual-axis compensator and WLAN,
- 1 Power Block battery, 1 Power Dock,
- 1 32GB SD card,
- 1 SD card reader, 1 SD card cover,
- 1 Optical cleaning set
- 1 Quick charge power supply
- 1 Car power supply
- 1 Ruggedized protection and transport cover in aluminum
- 1 Panorama Quick Release
- 1 rugged transport case with wheels
- 1 license SCENE software version 5.2
- 1 year maintenance contract for SCENE software.



Focus^{3D} X 330 -

S-7-330-LITE

Laser Scanner Focus3D X330.

Ships with:

- 1 Focus3D-X330, GPS, compass, altimeter (barometer), dual-axis compensator and WLAN,
- 1 Power Block battery, 1 Power Dock,
- 1 32GB SD card,
- 1 SD card reader, 1 SD card cover,
- 1 power supply
- 1 rugged case
- 1 license SCENE software version 5.2,
- 1 year maintenance contract for SCENE software.



FARO®
