

FARO®

Launch Information
Focus^{3D} X 130

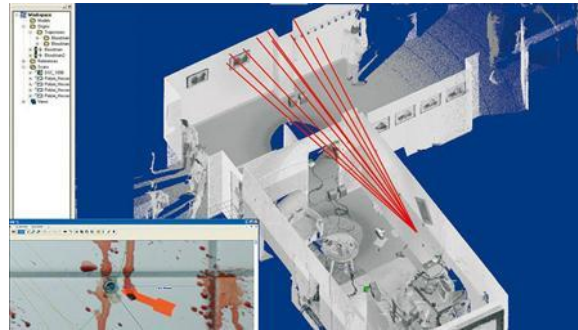




The multipurpose masterpiece

FARO Focus3D X 130

Applications



Focus^{3D} X 130



Range - 130 m

Xtra sun proof

Xtra positioning - GPS

Xtra noise reduction
- 2x

Xtra peace of mind -
Class 1

Portfolio Laser Scanner

Current



Focus3D S20



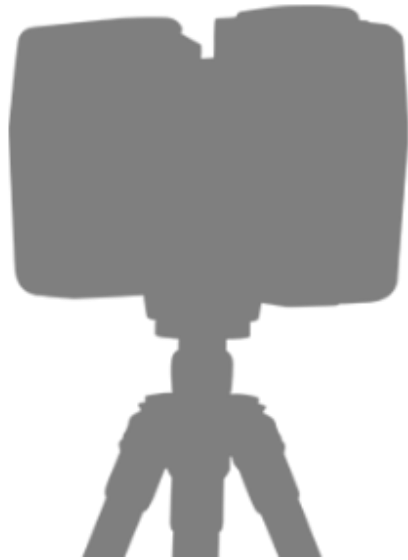
Focus3D S120



Focus3D X330

Portfolio Laser Scanner

Starting March 3rd.



Focus3D S20



Focus3D X 130



Focus3D X330

Case content



- **Panorama quick release.**
 - Simple way to easy take the scanner on and off, and be able to mount in every tripod (included in S-7-130).

Focus^{3D} X 130 - Pricing

S-7-130

Laser Scanner Focus3D X130.

Ships with:

- 1 Focus3D-X330, GPS, compass,
- altimeter (barometer), dual-axis compensator and WLAN,
- 1 Power Block battery,
- 1 Power supply
- 1 32GB SD card,
- 1 SD card reader, 1 SD card cover,
- 1 Panorama Quick Release
- 1 rugged transport case
- 1 license SCENE software
- 1 year maintenance contract for SCENE software.

**EMEA
region**

Focus^{3D} X 130 - Specifications

Range Focus^{3D} X 130:	0.6 – 130m
Measurement speed:	up to 976,000 points/second
Ranging error:	± 2mm
Ranging noise:	@10m – raw data: 0.3mm @90 % refl. @25m – raw data: 0.3mm @90 % refl. @10m – raw data: 0.4mm @10 % refl. @25m – raw data: 0.5mm @10 % refl.
Integr. colour camera:	Up to 70 mio. pixel
Field of view:	300° / 360°
Laser class:	Laser class 1
Weight:	5,2kg
Multi-Sensor:	GPS, Compass, Height Sensor, Dual Axis Compensator
Size:	240 x 200 x 100mm
Scanner control:	via touchscreen display and WLAN
New WLAN access:	Remote control, scan visualization and are possible on mobile devices with Flash®

FARO®
